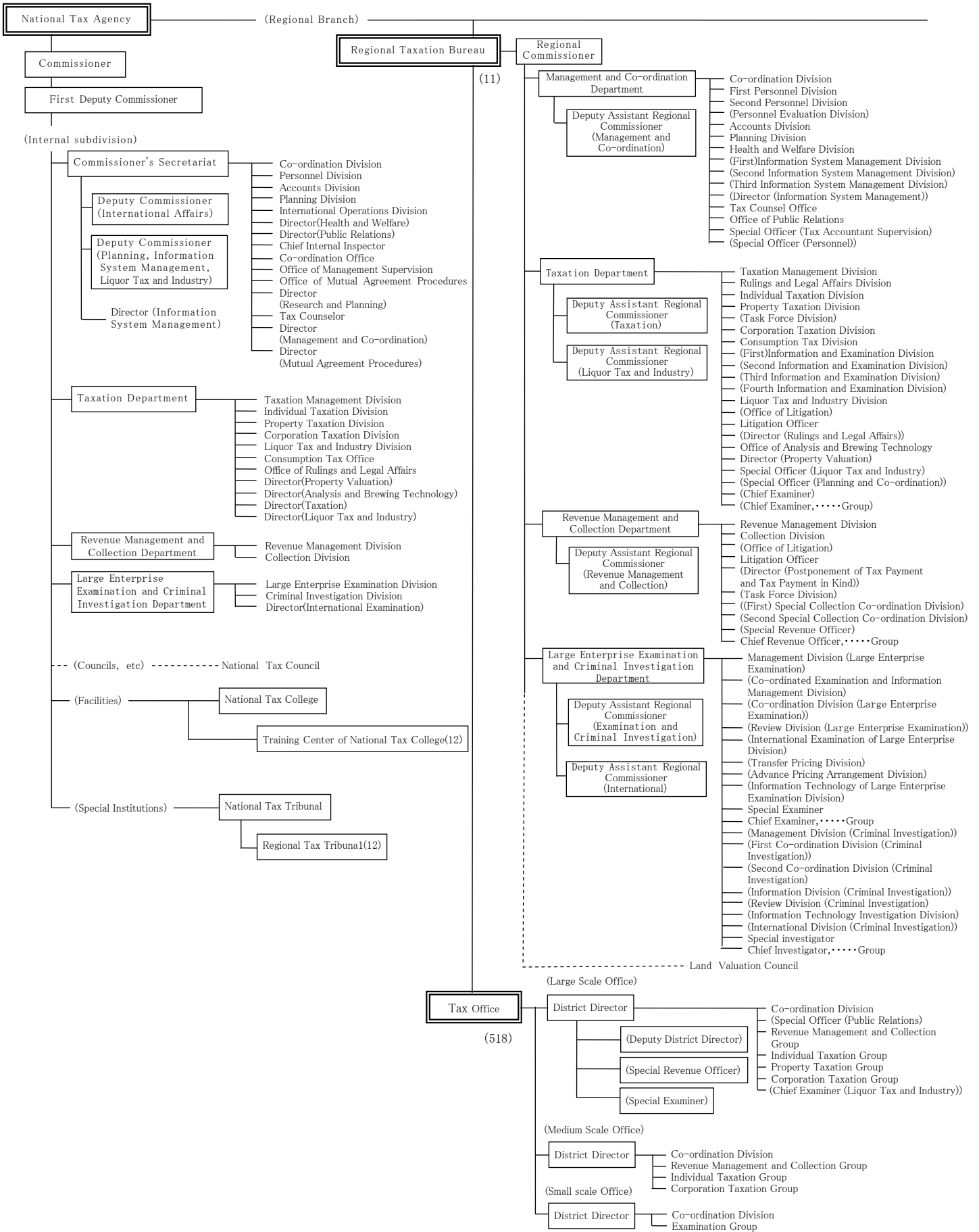


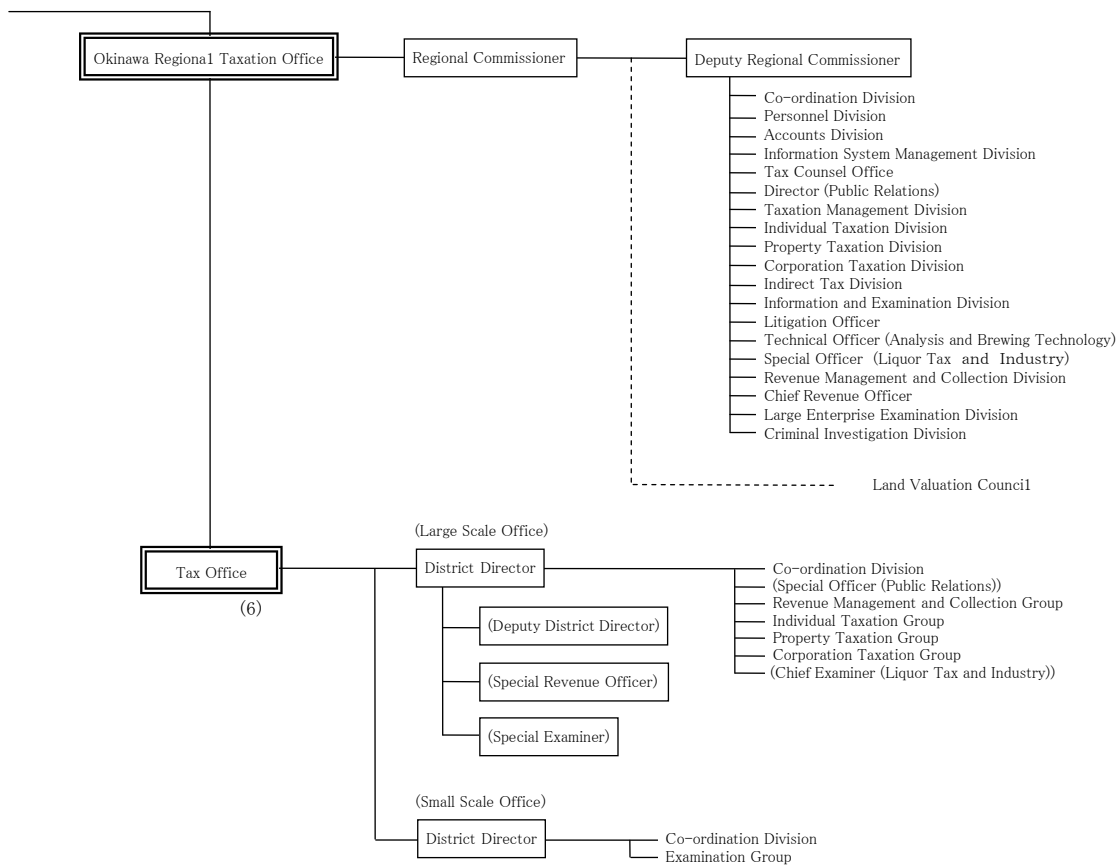




# 1 - 3 Organization Chart of National Tax Agency

(FY2007)(Number of persons: 56,185)





Note:

- 1 The Taxation Departments of Regional Taxation Bureaus other than Kanazawa, Takamatsu, and Kumamoto are composed as follows:  
First Taxation Department, and Second Taxation Department
- 2 The Examination and Criminal Investigation Departments of Tokyo, Nagoya and Osaka Regional Taxation Bureaus are composed as follows:  
Tokyo : First Examination Department, Second Examination Department Third Examination Department, Fourth Examination Department, and Criminal Investigation Department  
Nagoya : Examination Department and Criminal Investigation Department  
Osaka : First Examination Department, Second Examination Department, and Criminal Investigation Department
- 3 Organization of Regional Taxation Bureau and Taxation Office written in brackets are those which are not located in every Bureau/Office.