

# 2018 INCOME TAX

## AND SPECIAL INCOME TAX FOR RECONSTRUCTION

# GUIDE

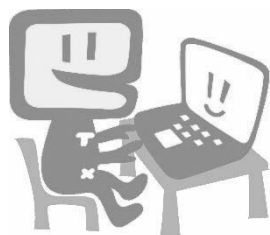
The filing period of your taxable income in the period of the calendar year 2018, is open;

**From February 18 (Mon.)  
through March 15 (Fri.), 2019.**

- The assistance to fill out your final return form at the Tax Office is also provided within the period (see page 3).
- You are advised that you file your final return and complete the payment **before March 15 (Fri.), 2019**, if you earn taxable income in the calendar year 2018, from January 1 to December 31.
- When you can receive a tax refund, the tax office accept your final return **before February 15 (Fri), 2019**.

### - NOTICE -

- ✓ The exemption and the special exemption for spouses has been revised (see page 39).
- ✓ If you have your Individual Number for Social Security and Tax (“My-Number”), you need to write your number in your return form. You also need to present your identification documents or attach copies of them.  
【Example of identification documents】  
e. g. 1 Individual Number Card (“My-Number Card”)  
e. g. 2 Notification card of the Individual Number and Driver's license or Passport etc.



- A final return form, appendix, statement, etc. are available for download from our website ([www.nta.go.jp](http://www.nta.go.jp)). These are also available at Tax Offices.
- This guide explains how to complete **the final return form B**. Anyone can use the final return form B regardless of the type of income.
- This guide provides general information about income tax returns in Japan. If you have any question, please contact the nearest Tax Office.
- In this guide, income tax and special income tax for reconstruction are referred to as income tax etc.
- The outlines indicated by [ ] are available for Japanese text only.