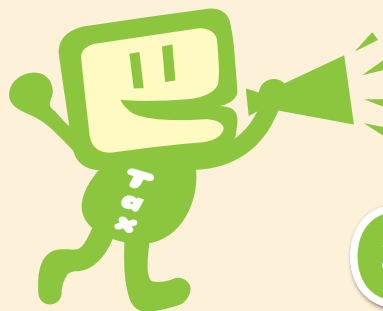


NATIONAL TAX AGENCY REPORT 2017

Issued in June 2017

3-1-1 Kasumigaseki,
Chiyoda-ku, Tokyo, 100-8978
Japan
TEL.03-3581-4161 (Representative)

NTA Website (English)
http://www.nta.go.jp/foreign_language/index.htm



Mr. e-Ta

Make it SIMPLE
via online system

e-Tax

Online National Tax Return Filing and Tax Payment System



Your taxes help to sustain our community

リサイクル適性(A)

この印刷物は、印刷用の紙へ
リサイクルできます。